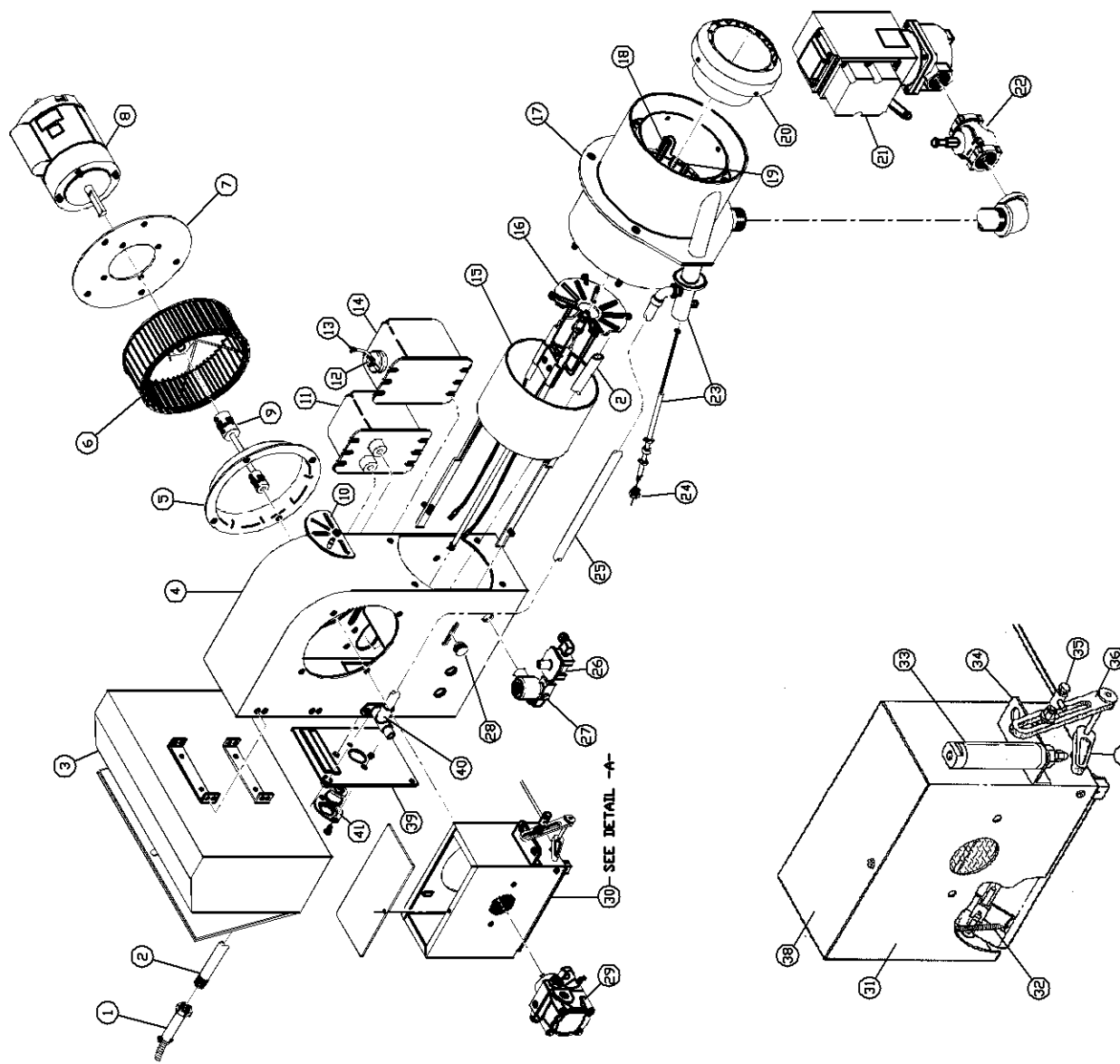


ITEM	PART DESCRIPTION	PART NUMBER
1	FLAME DETECTOR	SEE ML
2	FLAME DETECTOR TUBE	907000-6213
3	CONTROL CABINET	SEE ML
4	BURNER HOUSING	SEE ML
5	AIR INLET CONE	SEE ML
6	BLOWER WHEEL	SEE ML
7	MOTOR MOUNTING PLATE	SEE ML
8	BLOWER MOTOR	SEE ML
9	DIL PUMP COUPLING	SEE ML
10	LINKAGE CONTROL	050784-0000
11	DIL IGNITION TRANSFORMER (IF USED)	SEE ML
12	TRANSFORMER KNOB	010192-0010
13	GAS PILOT IGNITION CABLE (SPECIFY LENGTH)	I20018-1040
14	GAS PILOT IGNITION TRANSFORMER	SEE ML
15	PRIMARY AIR CYLINDER	SEE ML
16	OIL DRAWER ASSEMBLY	SEE ML
17	AIR NOZZLE	SEE ML
18	OIL NOZZLE ADAPTER	SEE ML
19	OIL IGNITION ELECTRODES (IF USED)	SEE ML
20	MAIN FUEL TUBE	SEE ML
21	IGNITION CABLES (IF USED) (SPECIFY LENGTH)	I20018-1040
22	COMBUSTION HEAD	SEE ML
23	PRIMARY GAS DRIFICES	SEE ML
24	SECONDARY GAS DRIFICES (IF USED)	SEE ML
25	SWIRLER (IF USED)	SEE ML
26	MOTORIZED GAS VALVE	SEE ML
27	LEAK TEST VALVE	SEE ML
28	216C GAS PILOT ELECTRODE ASSEMBLY	SEE ML
29	PILOT AIR TUBE (SPECIFY LENGTH)	230032-0000
30	PILOT GAS PRESSURE REGULATOR	620014-0000
31	PILOT SOLENOID VALVE	SEE ML
32	PRIMARY AIR POSITIONING CONTROL KNOB	SEE ML
33	DIL PUMP	SEE ML
34	AIR INLET ASSEMBLY	SEE TABLE 1
35	AIR LOUVER	SEE TABLE 1
36	AIR LOUVER SPRING	SEE TABLE 1
37	OIL CYLINDER	SEE TABLE 1
38	OIL CYLINDER MOUNTING BRACKET	SEE TABLE 1
39	BALL JOINT	SEE TABLE 1
40	AIR LOUVER ARM	SEE TABLE 1
41	OIL ACTUATOR ARM	SEE TABLE 1
42	AIR INLET BOX COVER	SEE TABLE 1
43	BACK PLATE ASSEMBLY	SEE TABLE 2
44	AIR SCOOP	SEE TABLE 3
45	LENS ASSEMBLY	SEE TABLE 1
46	LENS (1)	010136-0000
47	LENS GASKET (2)/GASKET PILOT (1)	220008-0000
48	LENS RETAINER (1)	240172-0000



TYPICAL R6, R8, R10.9, R10, R10.1 GAS/OIL BURNER
SEE PART IV FOR GAS SYSTEM COMPONENTS, PART V FOR OIL SYSTEM COMPONENTS AND PART VI FOR COMBUSTION CONTROLS.