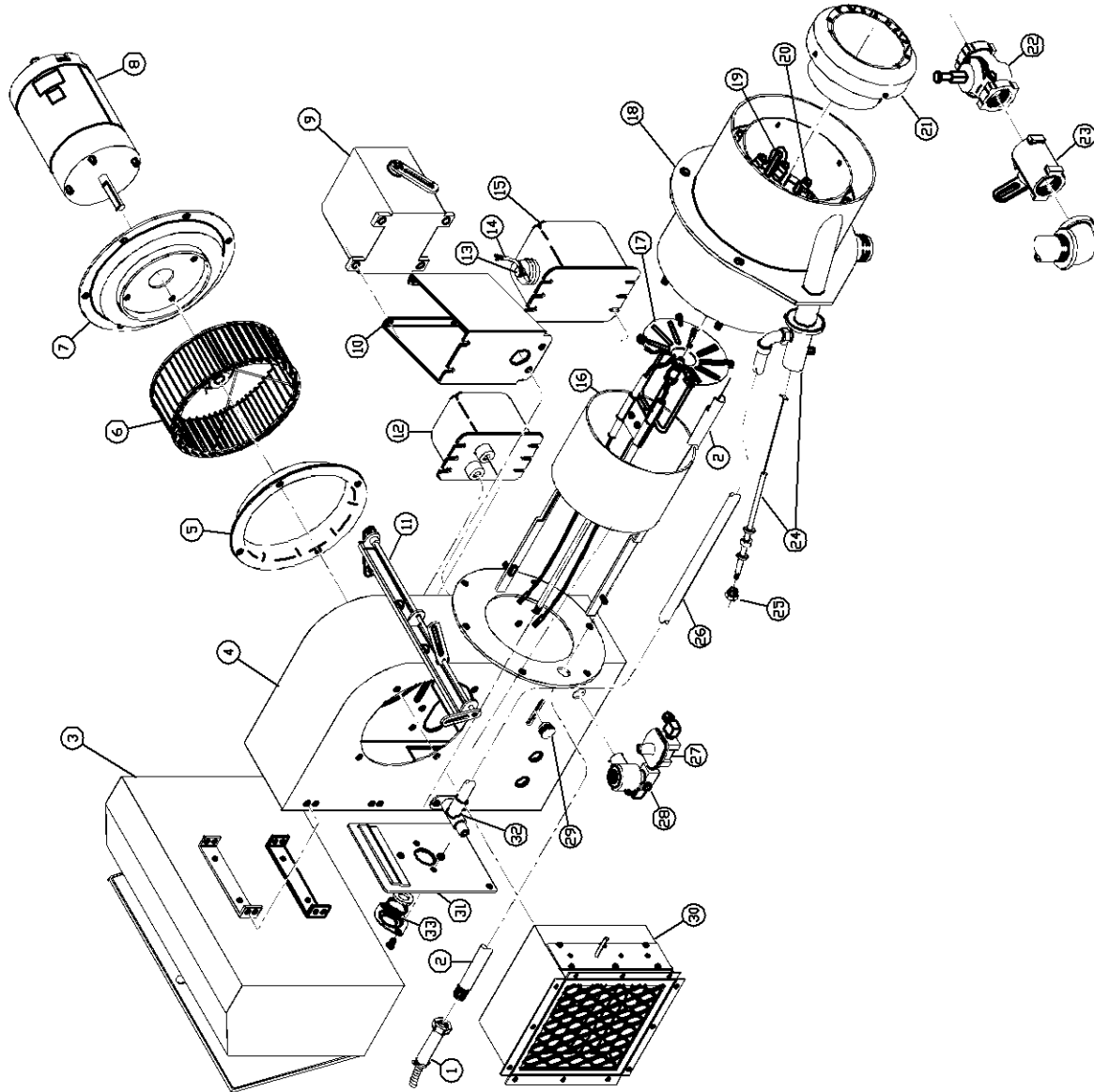


ITEM	PART DESCRIPTION	PART NUMBER
1	FLAME DETECTOR	SEE NL
2	FLAME DETECTOR TUBE	907000-6213
3	CONTROL CABINET	SEE NL
4	BURNER HOUSING	SEE NL
5	AIR INLET CONE	SEE NL
6	BLOWER WHEEL	SEE NL
7	MOTOR MOUNTING PLATE	SEE NL
8	BLOWER MOTOR	SEE NL
9	MODULATING MOTOR	SEE NL
10	MODULATING MOTOR BRACKET	060041-0001
11	LINKAGE CONTROL JACKSHAFT	924005-4900
12	OIL IGNITION TRANSFORMER (IF USED)	SEE NL
13	TRANSFORMER KNOB	010192-0010
14	GAS PILOT IGNITION CABLE (SPECIFY LENGTH)	120018-1040
15	GAS PILOT IGNITION TRANSFORMER	SEE NL
16	PRIMARY AIR CYLINDER	SEE NL
17	OIL DRAWER ASSEMBLY	SEE NL
18	AIR DEFUSER	SEE NL
19	OIL NOZZLE	SEE NL
20	OIL NOZZLE ADAPTER	SEE NL
21	OIL IGNITION ELECTRODES (IF USED)	SEE NL
22	MAIN FUEL TUBE	SEE NL
23	IGNITION CABLES (IF USED) (SPECIFY LENGTH)	120018-1040
24	COMBUSTION HEAD	SEE NL
25	PRIMARY GAS DRIFICES (OUTER RING)	SEE NL
26	SECONDARY GAS DRIFICES (IF USED)	SEE NL
27	SWIRLER	SEE NL
28	LEAK TEST VALVE	SEE NL
29	BUTTERFLY GAS VALVE	SEE NL
30	216C GAS PILOT ELECTRODE ASSEMBLY	230032-0000
31	216C PILOT PACKING NUT	620014-0000
32	PILOT AIR TUBE (SPECIFY LENGTH)	SEE NL
33	PILOT GAS PRESSURE REGULATOR	SEE NL
34	PILOT GAS SOLENOID VALVE	SEE NL
35	PRIMARY AIR POSITIONING CONTROL KNOB	010192-0000
36	AIR INLET ASSEMBLY	SEE TABLE 1
37	BACK PLATE ASSEMBLY	SEE TABLE 2
38	AIR SCOOP	SEE TABLE 3
39	LENS ASSEMBLY	SEE NL
40	LENS (1)	010136-0000
41	LENS GASKET (2)/GASKET PILOT (1)	220008-0000
42	LENS RETAINER (1)	240172-0000



TYPICAL R10.2, R12 GAS/OIL BURNER