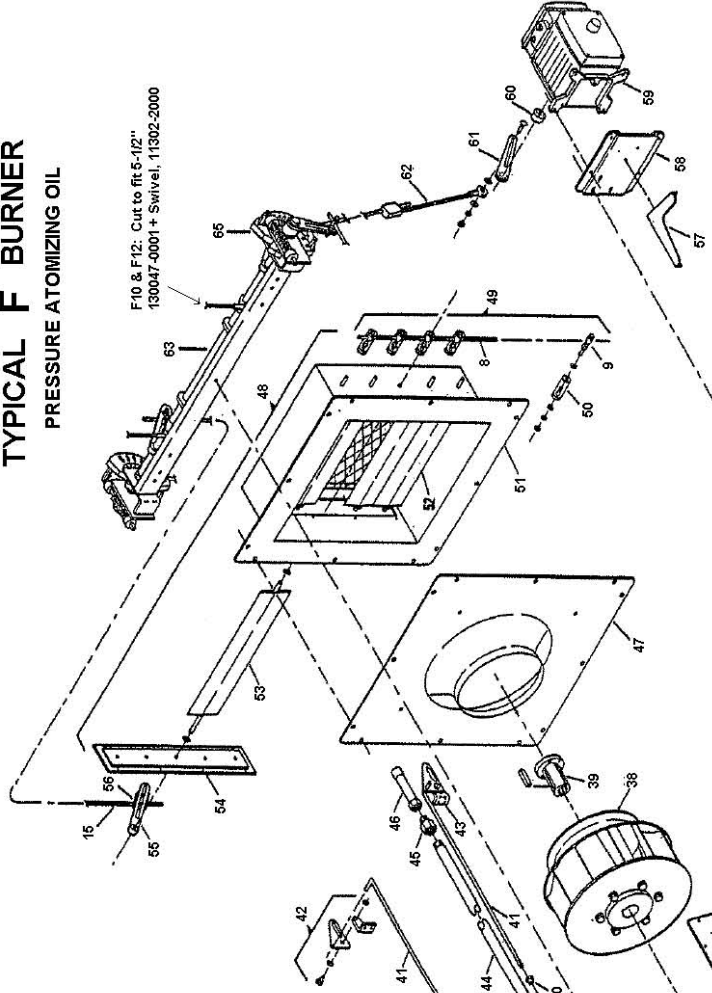


# ILLUSTRATED PARTS BREAKDOWN TYPICAL F BURNER PRESSURE ATOMIZING OIL

## LEGEND

Component	Part Number	Component	Part Number
1. Swirler	See ml	23. Air Flow Switch Assembly	322207-0020
2. Combustion Head	See ml	24. Support - Burner Housing	060208-0000
3. Primary Gas Orifices	See ml	25. Support - Burner	060006-0000
4. Secondary Gas Orifices	See ml	26. Cover - Wiring Channel	See Table 8
5. Gas Pressure Gauge	See Table 1	27. Wiring Channel	See ml
6. Butterfly Gas Valve	See Table 2	28. Burner Housing	160037-0000
7. Linkage Arm - Butterfly Gas Valve	010039-0010	29. Pilot Air Supply Fitting	620014-0000 (3")
8. Linkage Rod	See Table 6	30. Pilot Air Supply Tube	010192-0010
9. Ball Joint Connector	110301-3000	31. Transformer Knob	911900-0068
10. Electric Motor	See ml	32. Knob - Primary Air Sleeve	
11. Spacer - Electric Motor	908002-6300	33. Primary Air Position Scale	
12. Cover - Junction Box	140008-1000		
13. Terminal Strip	See ml	34. Gas Pilot Ignition Transformer	090110-0000
14. Junction Box	180006-1000	35. Gas Pilot Solenoid Valve	090109-0000
15. Linkage Rod	130102-0004	36. Gas Pilot Regulator	324201-0020
16. Spacer - Junction Box	240037-0000	37. Access Plate	350101-0399
17. Primary - Secondary Air Sleeve	See ml	38. Blower Wheel	050026-0000
18. Pilot Gas Ignitor Assembly	919000-0700 (6-1/2" nose)	39. Split Taper Bushing - Blower Wheel	See ml
19. Ignition Electrode and Insulator Assembly	921000-3500 (6-1/2" nose)	40. Primary Air Sleeve - Bushing	200001-0000
20. Orifice - Gas Pilot (if used)	See ml		
21. Ignition Wire	120026-1000		
22. Pilot Boot	010750-0010		



## Component

Component	Part Number
41. Rod - Primary-Secondary Air	See Table 3
42. Cylinder Linkage	See Table 4
43. Right Hand Actuator Cam Assembly	See Table 4
44. Left Hand Actuator Cam Assembly	907000-6213
45. Sight Tube - Flame Scanner	010212-0000
46. Adapter - Flame Scanner	See ml
47. Flame Scanner	See ml
48. Air Inlet Cone	See ml
49. Air Inlet Louver Box Assembly	See Table 5
50. Linkage Assembly - Air Louvers	010041-0004
51. Linkage Arm	See ml
52. Housing - Air Inlet Louver Box	See ml
53. Air Inlet Louver	See ml
54. Air Inlet Driver - Louver	See Table 5
55. Louver Access Plate	010039-0004
56. Linkage Arm	060372-0000
57. Keeper	060709-0000
58. Mounting Bracket - Modulating Motor	060582-0000
59. Bracket - Modulating Motor	See ml
60. Motor - Modulating	010065-0000
61. Hub	240206-0000
62. Linkage Arm	See Table 6
63. Drive Arm Assembly	See Table 7
64. Jackshaft Assembly	See ml
65. Air Diffuser	901008-6500
Characterized Linkage Assembly Cam	

\* Diaphragm airflow switch replaces the Mercury sail switch